

THE CAESAR

4* HOTEL

Situated in a group of fully refurbished Victorian buildings, The Caesar is in the peaceful setting of a residential district with excellent views of Queen's Gardens, near Hyde Park and Notting Hill. Its classic English-style façade contrasts with its modern, minimalist interior design.



- 140 rooms: 20 Single, 12 Single Executive, 66 Standard, 24 Executive, 12 Deluxe and 6 Family
- 24-hour reception and concierge service
- Wheelchair access
- Sauna and gym
- XO Restaurant and Bar
- Meeting and function rooms
- Roman mosaic collection
- Business centre
- Free Wi-Fi throughout the hotel
- 24-hour room service



- Hospitality tray (tea and coffee)
- Individual heating and air-conditioning
- LCD satellite TV
- Parquet floors in all guest rooms
- Hairdryer and direct telephone line
- Safe
- Views of the Queen's Gardens from some rooms
- Additional services: same-day laundry and ironing
- Cot available on request at no extra cost
- Small dogs allowed





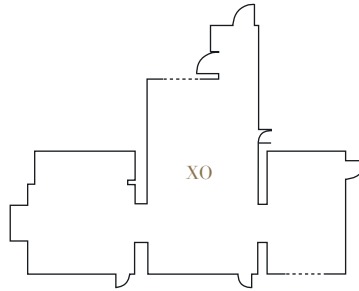
Albion



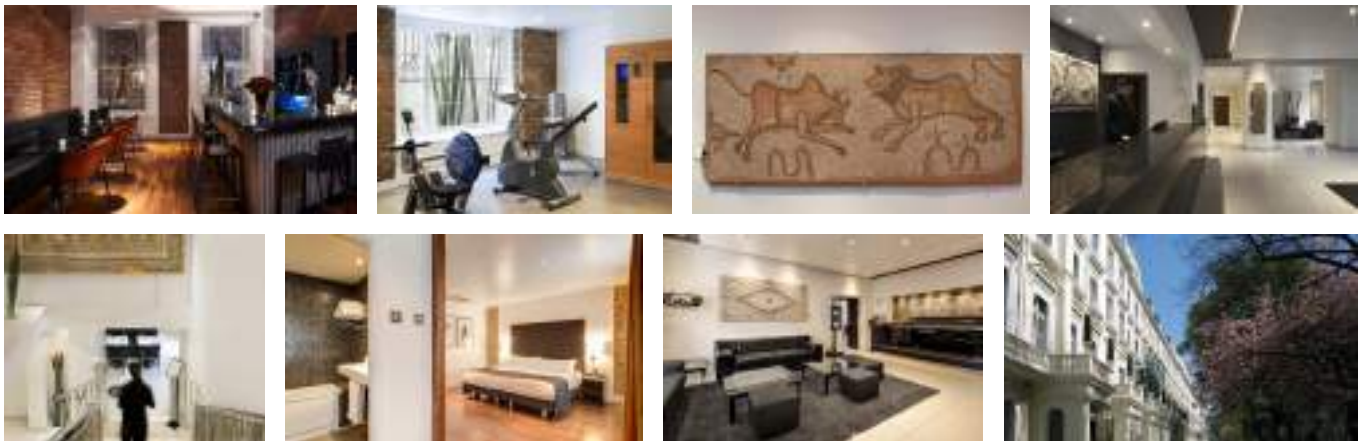
XO Restaurant



Albion

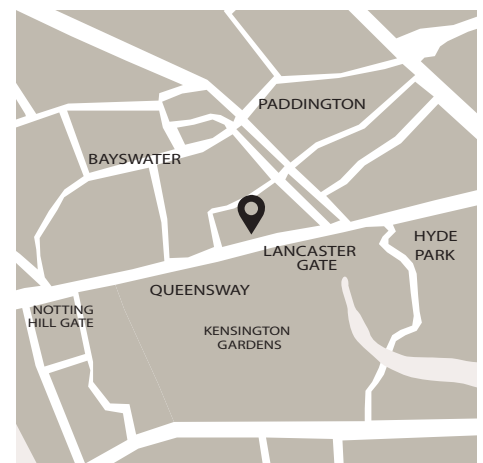


Capacity of meeting rooms	m ²	Ceiling height	Floor	Natural light	U	Meeting	School	Theatre	Banquet	Cocktail	Cabaret	Buffet
XO	200	2.90	-1	Yes	-	-	-	-	100	130	-	90
ALBION	45	2.6	0	Partial	17	22	21	40	26	50	-	50



26-33 Queen's Gardens, Hyde Park
 London W2 3BE
 Tel.: +44 (0)20 7262 0022
 Fax: +44 (0)20 7402 5099
 E-mail: thecaesar@derbyhotels.com
 www.thecaesarhotel.com

AMADEUS: WWLON527
 Galileo/Apollo: WW52835
 Worldspan: WW01527
 Sabre: WW21506



- | | |
|---------------------|----------------------------|
| BARCELONA | MADRID |
| Claris 5*CL | Urban 5*CL |
| Bagués 5* | Villa Real 5* |
| Araí 4*S | |
| Granados 83 4*S | LONDON |
| Suites Avenue | The Caesar 4* |
| Balmes Residence | |
| Balmes 4* | PARIS |
| Gran Derby Suite 4* | Banke 5* |
| Derby 4* | |
| Astoria 3* | BARCELONA APARTMENT |